

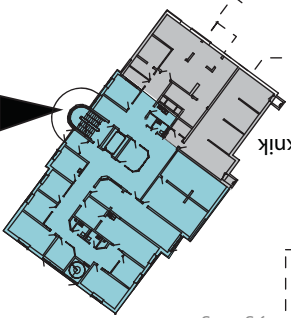
NIVEAU 00

- Øvrige**
- Adm./IT
 - Patienthotel
 - Gyn/Jordmodercenter
- DC - Diagnostisk Center**
- Radiologisk Afdeling
 - Laboratorie
 - Medicin
- CPK - Center for Planlagt Kirurgi**
- Kirurgi

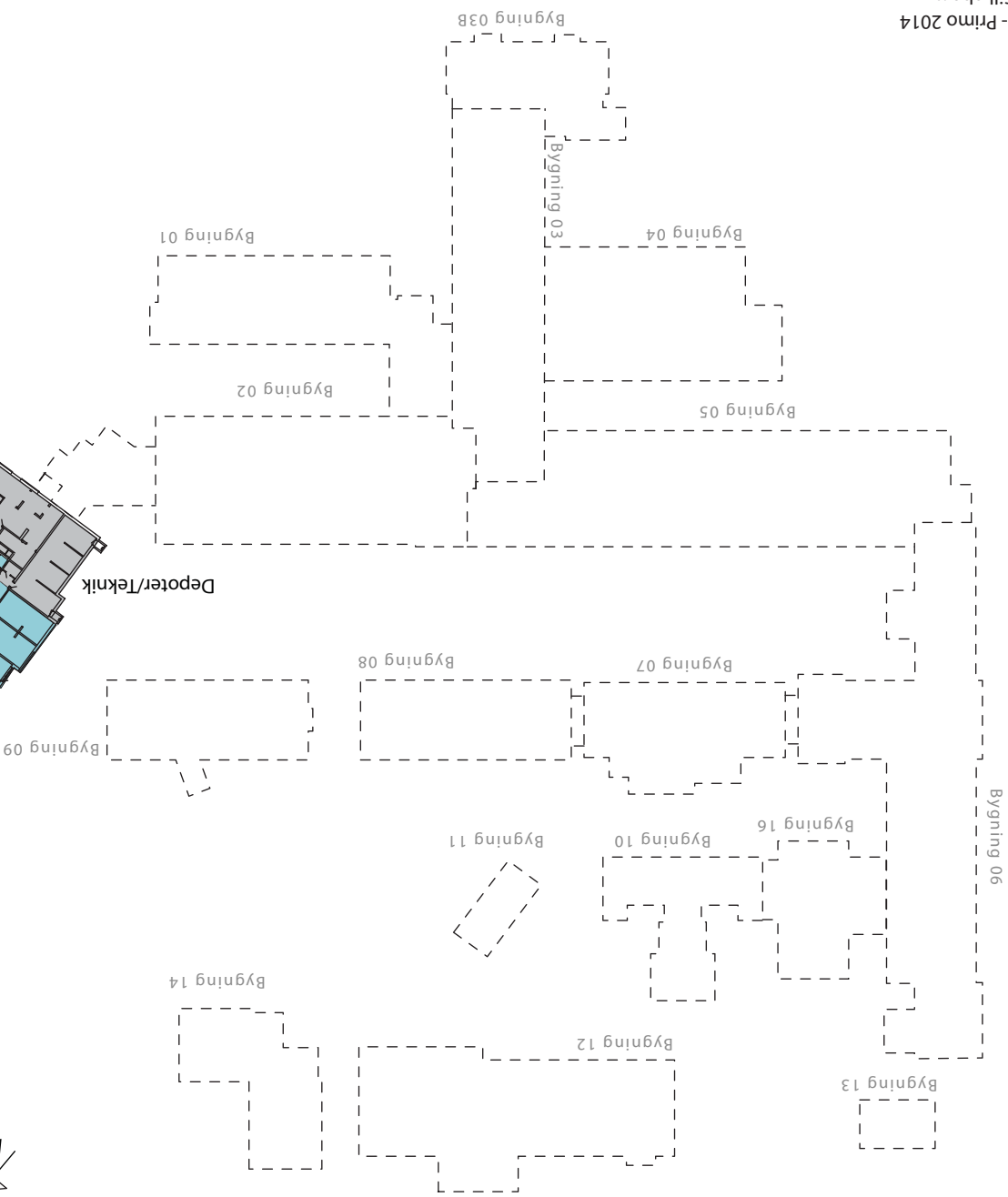
SIGNATURFORKLARING:

DC: Ambulatorier
Areal: 760 m²
DC: Reumatologisk afdeling | depot | teknik

Rumkpacette:
Areal: 464 m²
8 kontorer
2 konferencerum
+ print og toiletter

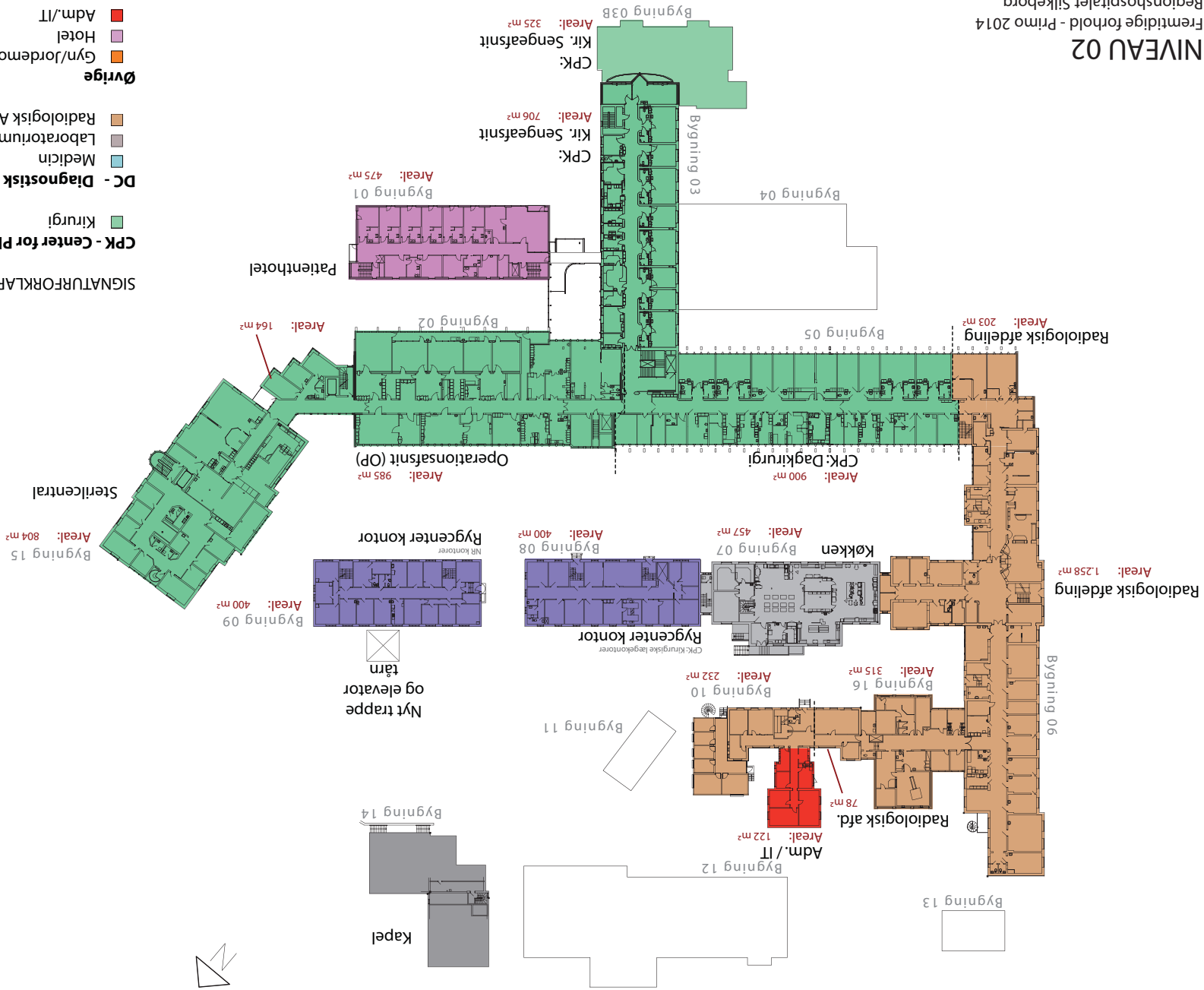


Depoter/teknik

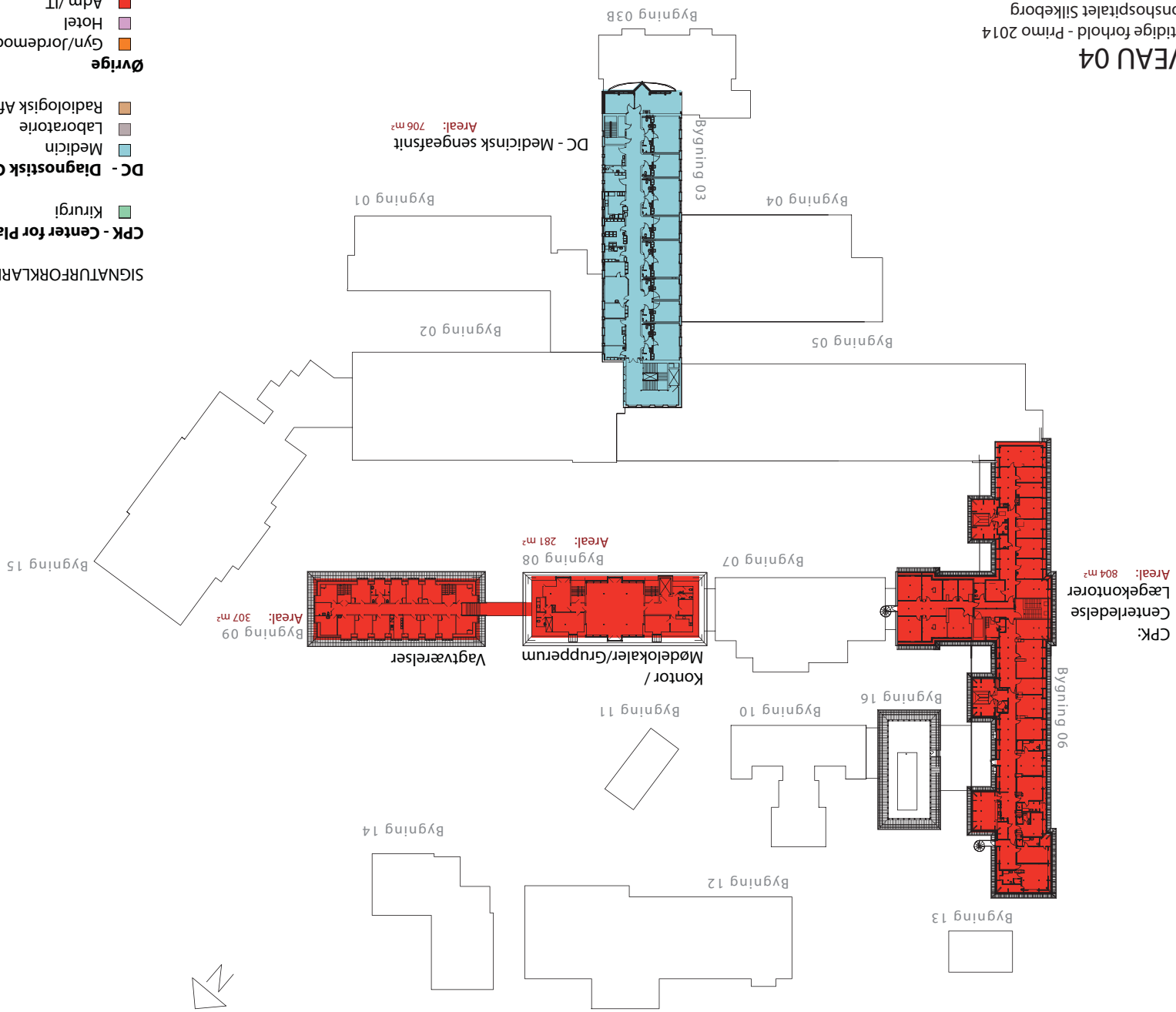


- SIGNATURFORKLARING:
- CPK - Center for Planlagt Kirurgi
 - Kirurgi
 - DC - Diagnostisk Center
 - Medicin
 - Laboratorium
 - Radiologisk Afdeling
 - Øvrige
 - Gyn/Jordemodercener
 - Hotel
 - Adm./IT

SIGNATURFORKLARING:



- SIGNATURFORKLARING:
- CPK - Center for Planlagt Kirurgi
 - DC - Diagnostisk Center
 - Medicin
 - Laboratorie
 - Radiologisk Afdeling
 - Øvrige
 - Gyn/Jordemodercenter
 - Hotel
 - Adm./IT



- CPK - Center for Planlagt Kirurgi**
- Kirurgi
- DC - Diagnostisk Center**
- Medicin
 - Laboratorie
 - Radiologisk Afdeling
- Øvrige**
- Gyn/Jordemodercenter
 - Hotel
 - Adm./IT

SIGNATURFORKLARING:

